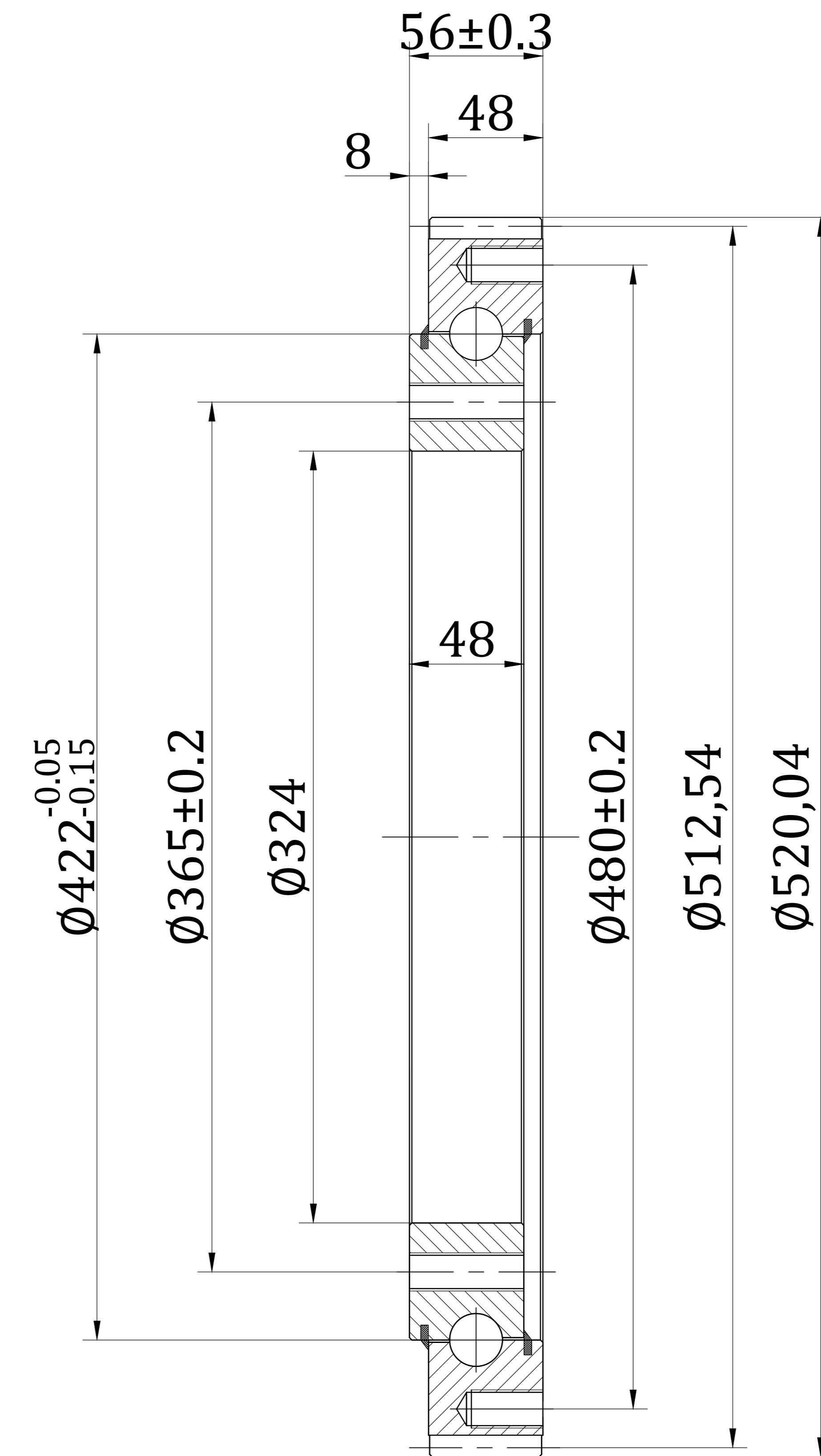
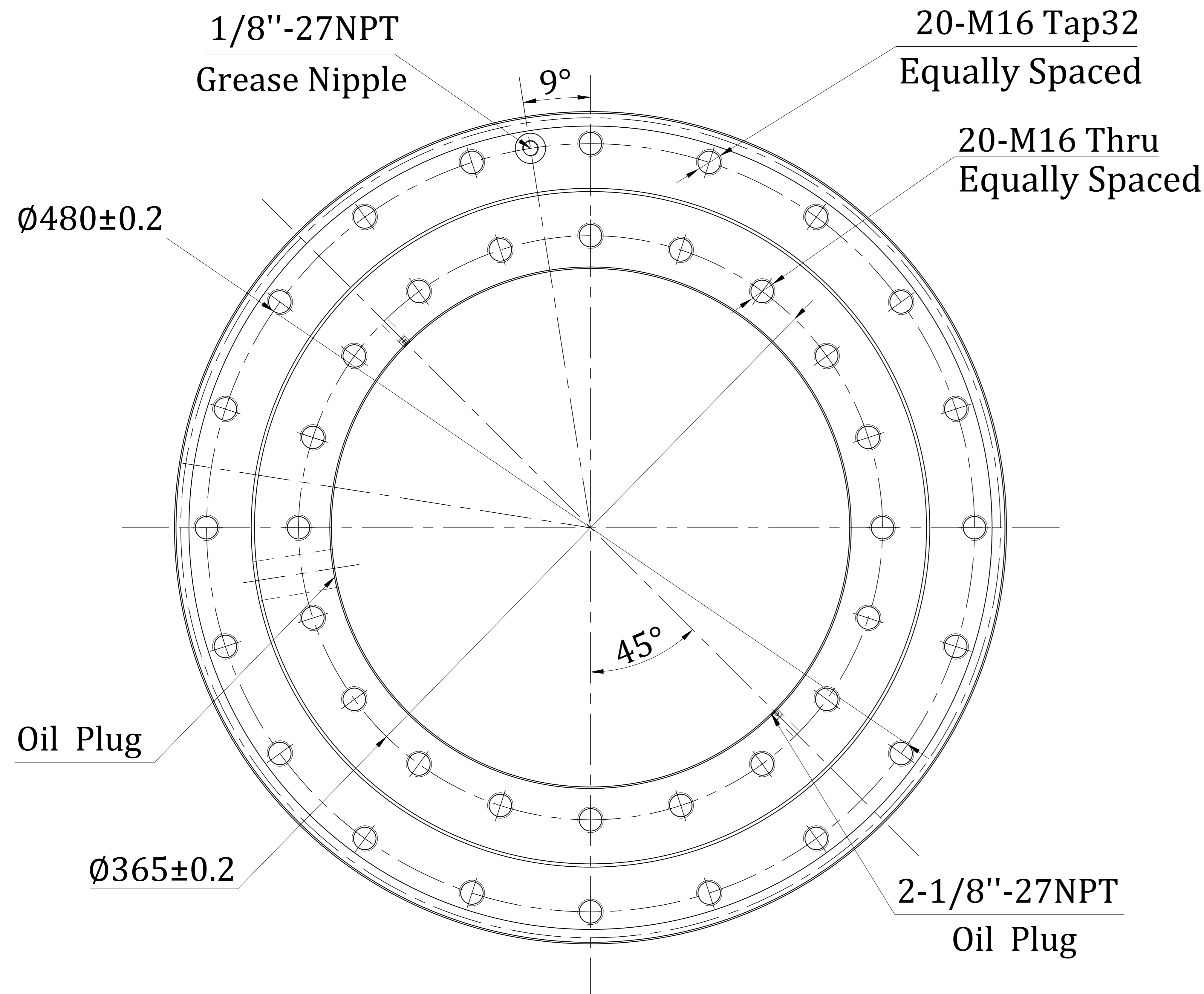
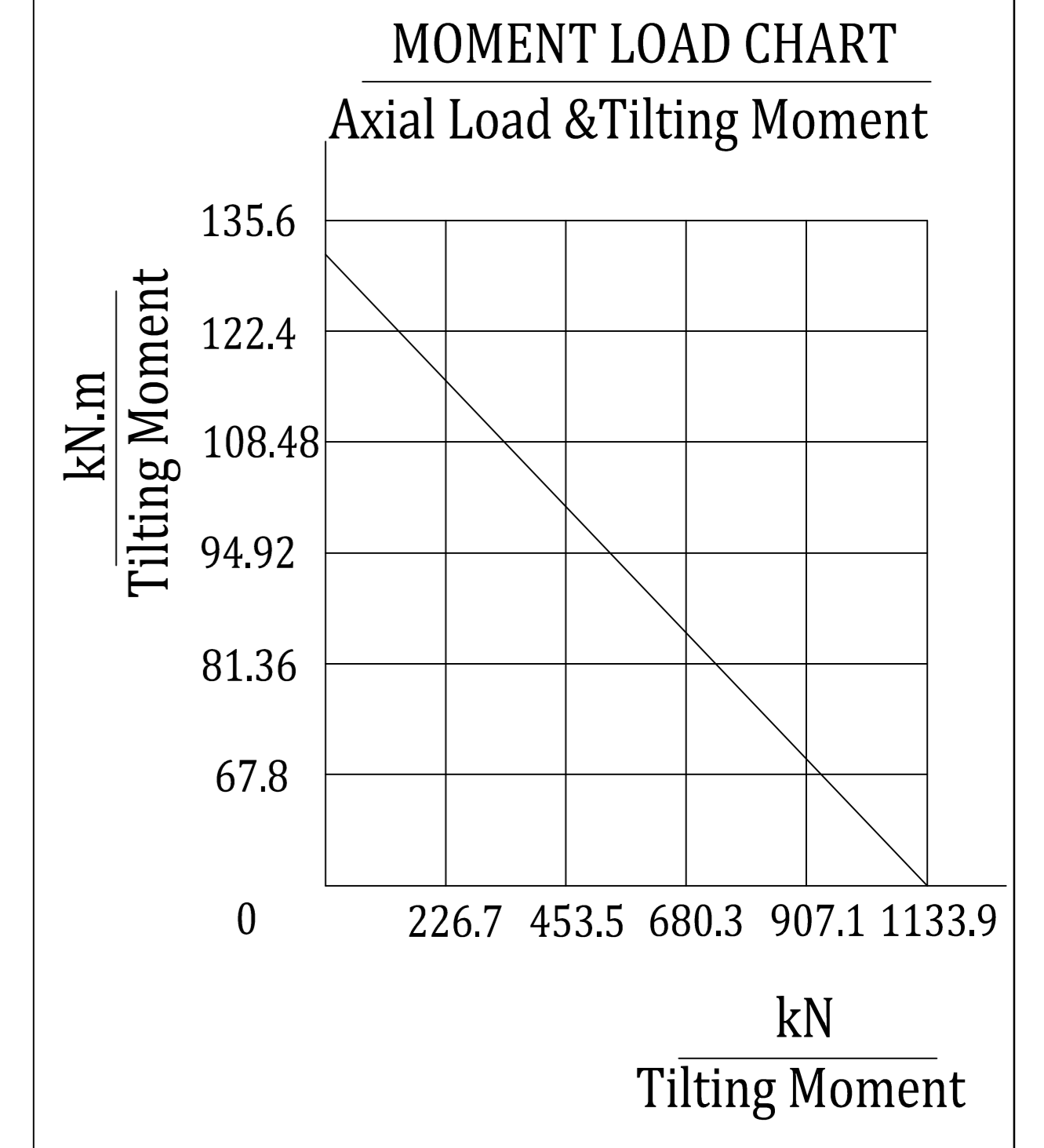


Gear parameters		
Normal modulus	$m_n$	5/3.75
Number of teeth	Z	102
Tooth angle	$\alpha$	20°
Addendum height coefficient	$ha^*$	1
Helix angle	$\beta$	5°42'39"
Rotation direction	Dextral	
Average length and deviation of common normal	$W_{k \frac{Ews}{Ewi}}$	176.992 <sup>-0.225</sup> / <sub>-0.335</sub>
Number of teeth measured across	k	12

Slewing Drive Performance Parameters		
Tilting Moment	135.6 kN.m	100x10 <sup>3</sup> lbf.ft
Holding Torque	72.3 kN.m	53.3x10 <sup>3</sup> lbf.ft
Static Axial Rating	970 kN	218.3x10 <sup>3</sup> lbf
Static Radial Rating	390 kN	87.8x10 <sup>3</sup> lbf



## Technical Requirement

1. The material is 50Mn, the modulated hardness of outer ring is HB235-285.
2. The quenching hardness of raceway surface is HRC-56-62, and the effective hardened layer depth is not less than 2.5mm.
3. Undeclared chamfer C1.

REV	DATE	REVISER	REVISER		
DESIGNED BY	2019/8/1	Li Ming	www.coresundrive.com		
CHECKED BY	2019/8/1	Rui Wang	Coresun Drive Equipment Changzhou Co., Ltd.		
APPROVED BY	2019/8/1	Shane Zhang			
ALL PROPRIETARY RIGHTS IN THE SUBJECT MATTER HERE OF ARE RESERVED, AND NO PERMISSION IS GRANTED OR TO DISCLOSE REPRODUCE THIS PRINT IN WHOLE OR IN PART, ANY OF THE INFORMATION TO OTHERS.			WEIGHT	SCALE	Slewing Ring
				1:3	
SYMBOLE ISO			SIZE	A3	SR-010-520-A362
			SHEET	1/1	
					REV A