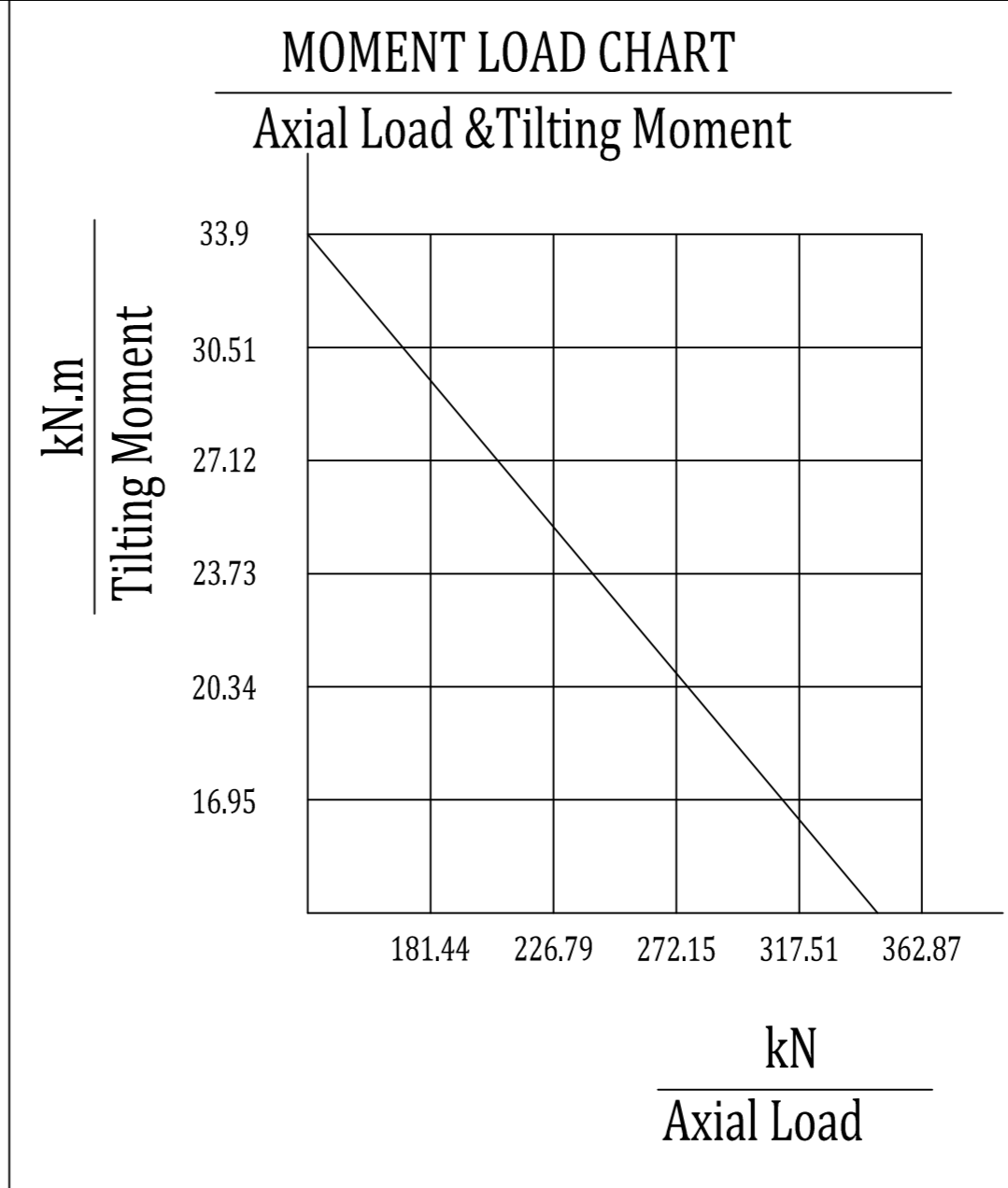
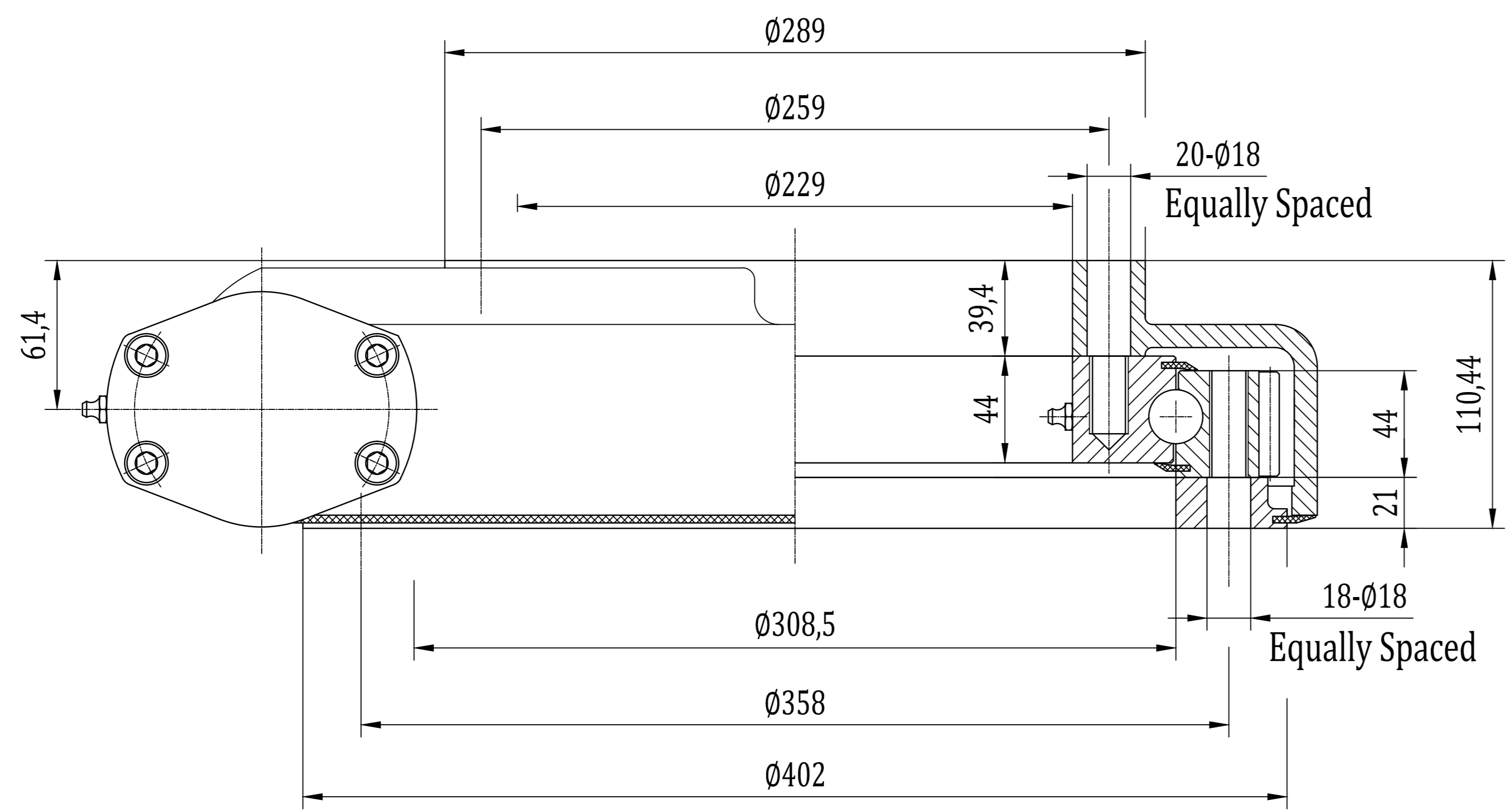


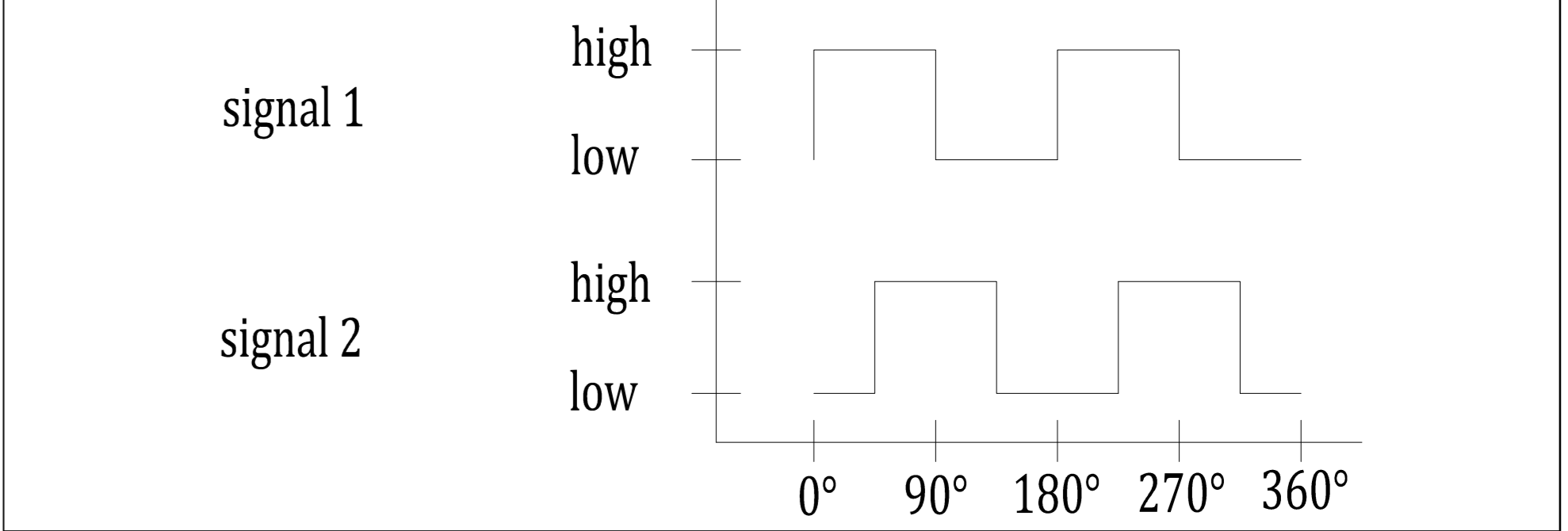
**Wire Define:**  
 Pin 1 (black) motor -  
 Pin 2 (red) motor +  
 Pin 3 (gray) Hall -  
 Pin 4 (brown) Hall +  
 Pin 5 (blue) Hall A  
 Pin 6 (orange) Hall B  
 Pin E (green) GND


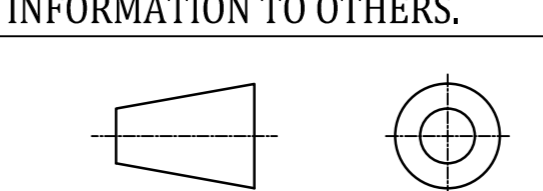


Slewing Drive Performance Parameters	
Rated Output Speed	0.038 rpm
Output Torque	1029 N.m
Tilting Moment	54.3 kN.m
Holding Torque	43 kN.m
Static Axial Load Rating	475 kN
Static Radial Load Rating	190 kN
Gear Ratio	61:1
Precision	≤0.17°

12VDC Planetary Reducer Motor Performance Data (24H/30/33)	
Rated Voltage	24 VDC
Rated Current	<2 A
Gear Ratio	575 : 1
Noises	≤65 dB
IP Class	IP55
Temperature	-40 - +60°C

MAGNETIC PULSE GENERATOR DATA		
Output type	-	voltage output
pull-up resistor	-	yes
Output signal	-	2 square wave signals
Phase quadrature	-	90°
Impulses per revolution	ppr	2, channels A and B
Operating voltage	VDC	UN=12(5... 24)
Operating current	mA	max. 12 (U=12V)
Deviation of pulse width	-	max. 15°
Deviation of phase shift	-	max. 15°
Output voltage(low level)	VDC	max. 0.4 (20mA)
SIGNAL RISE TIME	ns	85
SIGNAL DECAY TIME	ns	60
Operation temperature	°C	-40 ... +85



REV	DATE	REVISER	REVISER
DESIGNED BY	2019/8/1	Li Ming	 www.coresundrive.com Coresun Drive Equipment Changzhou Co., Ltd.
CHECKED BY	2019/8/1	Rui Wang	
APPROVED BY	2019/8/1	Shane Zhang	
ALL PROPRIETARY RIGHTS IN THE SUBJECT MATTER HERE OF ARE RESERVED, AND NO PERMISSION IS GRANTED OR TO DISCLOSE REPRODUCE THIS PRINT IN WHOLE OR IN PART, ANY OF THE INFORMATION TO OTHERS.			
SYMBOLE ISO			WEIGHT 64 kg SCALE 1 : 3 SIZE A3 SHEET 1 / 1
Slewing Drive SC12-78B-RC-24H3033			REV A